

QUININE SULFATE

BP 2024 / Ph.Eur. 11th Edt.

APPEARANCE

White or almost white or colourless, fine, silky needles, often in clusters

PARAMETER

LIMIT

Identification A. TLC / B. Bromine water-ammonia test / C. Fluorescence / D. Sulfate test / E. pH	passes
Appearance of solution	clear and \leq GY ₆
pH	5.7 – 6.6
Loss on drying	3.0 to 5.0 %
Specific optical rotation (on dry basis, c = 2.0 in 0.1 M HCl, $[\alpha]^{20}_D$)	- 237° to - 245°
Other Cinchona alkaloids (HPLC)	
Dihydroquinine Sulfate	\leq 10.0 %
Any other impurity eluted before Quinine	\leq 5.0 %
Any other impurity	\leq 2.5 %
Sulfated ash	\leq 0.1 %
Assay (on dry basis)	99.0 to 101.0 %
Residual solvents	meets the pharmacopoeial requirements

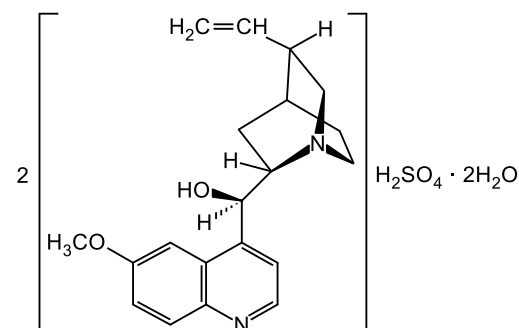
ORIGIN

Product is made in Germany.

CHEMICAL DATA

Formula $C_{40}H_{48}N_4O_4 \cdot H_2SO_4 \cdot 2H_2O$

CAS Number 6119-70-6



STANDARD PACKAGING

25 kg Unit

Outer container	Fiber drum
Outer liner	LDPE
Inner liner	LDPE

STABILITY

Product is stable for 5 years from date of production if stored under recommended conditions in original packaging.

STORAGE

Store in the original packaging to protect from light. No specific temperature requirements.

VERSION / VALID FROM

03 / 28.02.2024