

QUINIDINE SULFATE

Ph.Eur. 11th Edt.

APPEARANCE

White or almost white or colourless, fine, silky needles, often in clusters

PARAMETER

LIMIT

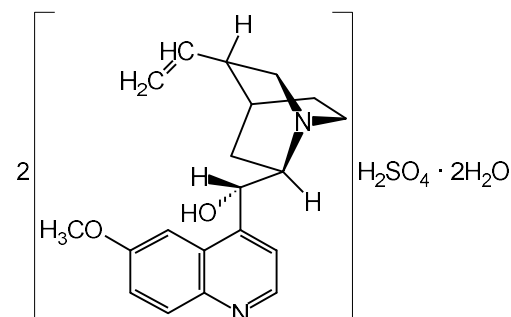
Identification A. TLC / B. Bromine water-ammonia test / C. Fluorescence / D. Sulfate test (silver nitrate) / E. Sulfate test / F. pH	passes
Appearance of solution	clear and \leq GY ₆
pH	6.0 to 6.8
Loss on drying	3.0 to 5.0 %
Specific optical rotation (on dry basis, c = 2.0 in 0.1 M HCl, $[\alpha]^{20}_D$)	+ 275 ° to + 290 °
Other Cinchona alkaloids (HPLC)	
Dihydroquinidine	\leq 15.0 %
Any other impurity eluted before Quinidine	\leq 5.0 %
Any other impurity	\leq 2.5 %
Unknown impurities	\leq 0.1 %
Boron	\leq 5 ppm
Sulfated ash	\leq 0.1 %
Assay (on dry basis)	99.0 to 101.0 %
Residual solvents	meets the pharmacopoeial requirements

ORIGIN

CHEMICAL DATA

Formula C₄₀H₄₈N₄O₄·H₂SO₄·2H₂O

CAS Number 6591-63-5



STANDARD PACKAGING

25 kg Unit

Outer container Fiber drum

Outer liner LDPE

Inner liner LDPE

STABILITY

Product is stable for 5 years from date of production if stored under recommended conditions in original packaging.

STORAGE

Store in the original packaging to protect from light. No specific temperature requirements.

VERSION / VALID FROM

02 / 20.01.2023