

# CUPREIDINE BASE

## Buchler specification (Fine chemical)

### APPEARANCE

beige to pale yellow, light yellow powder

### PARAMETER

### LIMIT

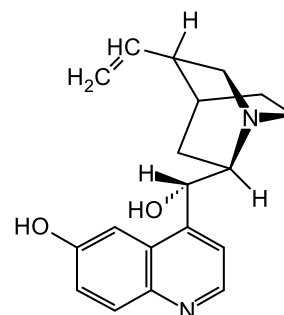
Identification by HPLC	passes
Water content (Karl Fischer)	≤ 5.0 %
Specific optical rotation (on dry basis, c = 2.0 in MeOH, [α] <sup>20</sup> <sub>D</sub> )	+ 283° to + 295°
Cinchona alkaloids (HPLC Area%)	
Cupreidine	≥ 95.0 %
Dihydrocupreidine	≤ 5.0 %
Sum of other impurities	≤ 1.5 %
Assay (on dry basis)	≥ 98.0 %
Sulfates	≤ 1000 ppm
Chlorides	≤ 1000 ppm

### ORIGIN

Product is made in the European Union.

### CHEMICAL DATA

Formula C<sub>19</sub>H<sub>22</sub>N<sub>2</sub>O<sub>2</sub>  
CAS Number 70877-75-7



### STANDARD PACKAGING

25 kg Unit  
Outer container Fiber drum  
Outer liner LDPE  
Inner liner LDPE

### STABILITY

Product is stable for 5 years from date of production if stored under recommended conditions in original packaging.

### STORAGE

Store in the original packaging to protect from light. No specific temperature requirements.

### VERSION / VALID FROM

04 / 11.08.2023